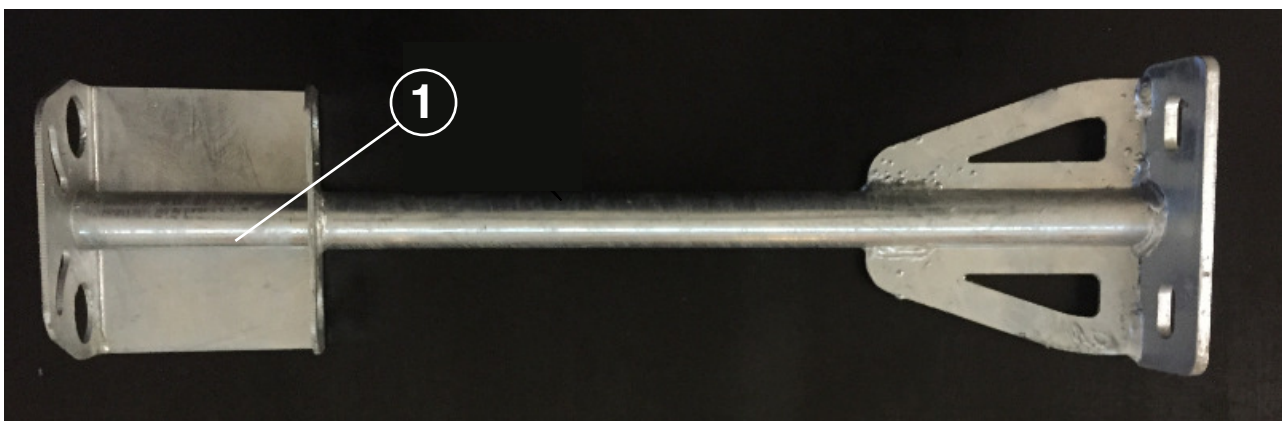
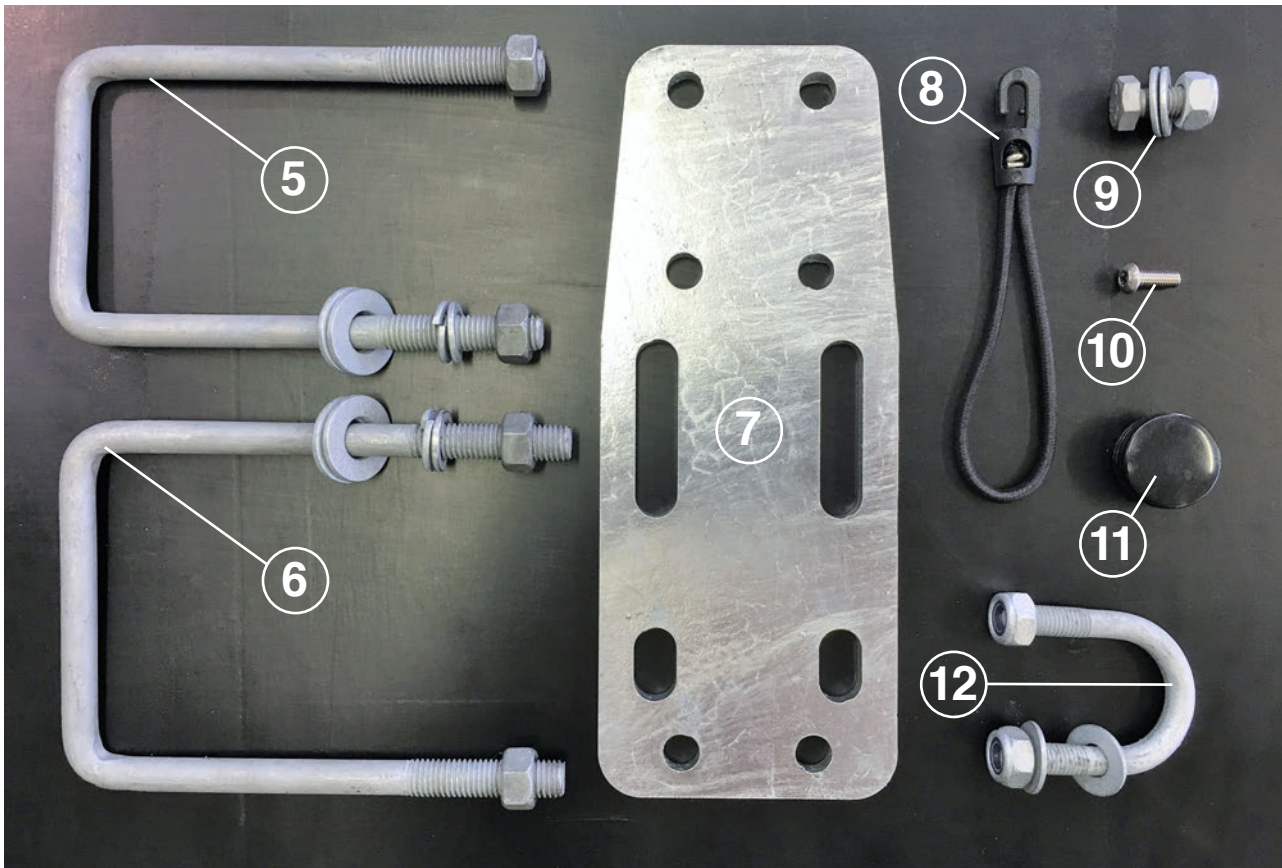


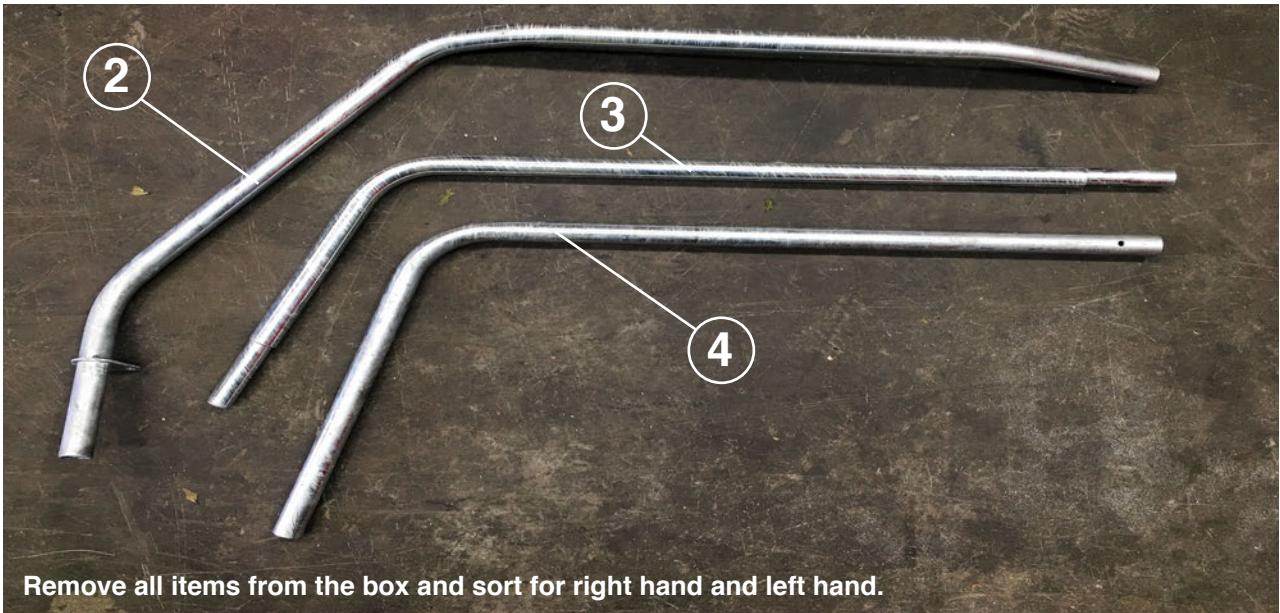
Assembly and Fitting Instructions

Installation should only be performed by a suitably skilled person.
 Updated - July 7, 2017 Part numbers DSG014-B & DSG027-A

Item	Qty.	Description	Item	Qty.	Description
1	1	Front Support Post	8	22	Bungee Cord Loops
2	1 each	Upper Support Post RH & LH	9	2	M10 x 20 Bolt
3	2	Upper Tube Rear	10	4	M6 x 15 Screw
4	1 each	Rear Vertical Tube RH & LH	11	1	Plastic End Cap 32mm
5	1	U Bolt M12 Front Mount	12	4	M10 U Bolt Rear Mount
6	2	U Bolt M12 Rear Mount	13	2	Mesh RH & LH
7	2	Rear Mount Plate			



Assembly of Left Hand Frame.



Remove all items from the box and sort for right hand and left hand.

Step 1

Slide Upper Tube Rear **item 3** into Upper Tube Front LH **item 2** (as shown in figure 1) and secure with M6 x 15 Screw (as shown in figure 2).

Slide other end of Upper Tube Rear **item 3** into Rear Vertical Tube LH **item 4** and secure with M6 x 15 Screw **item 10**.

Figure 1

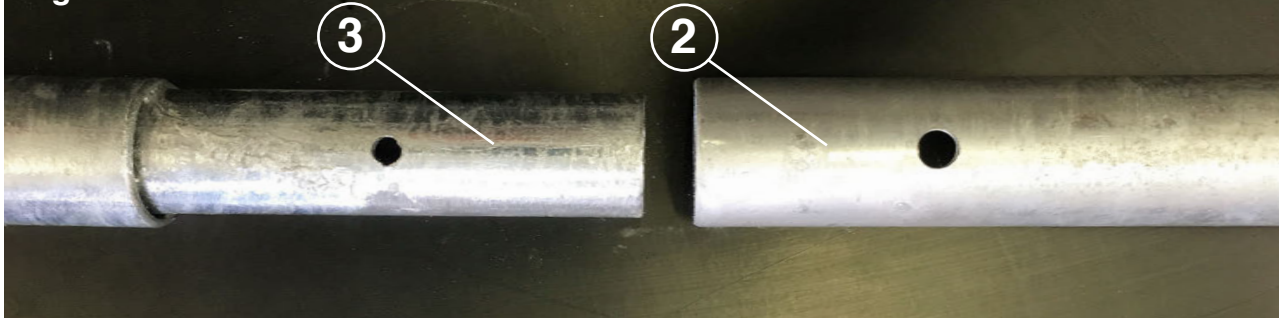
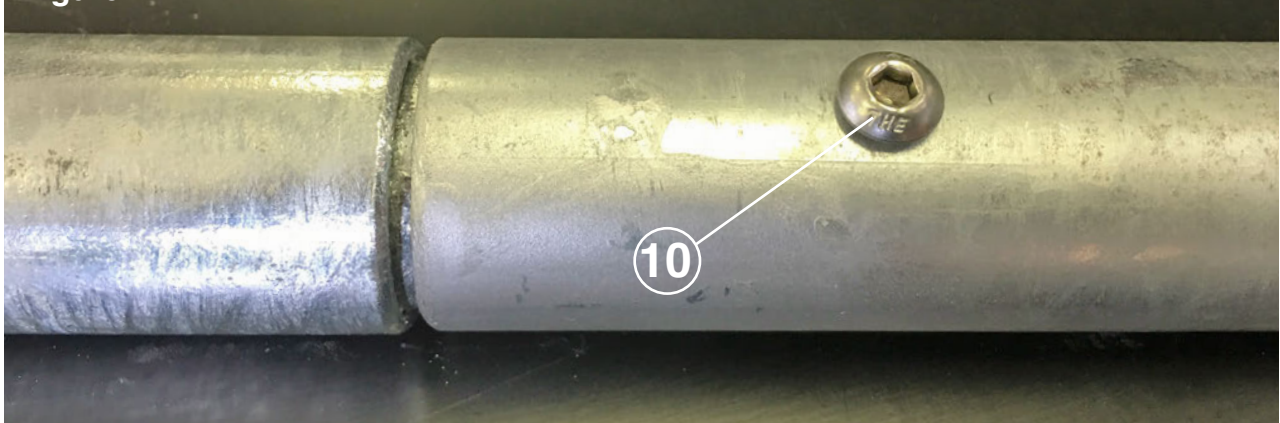


Figure 2



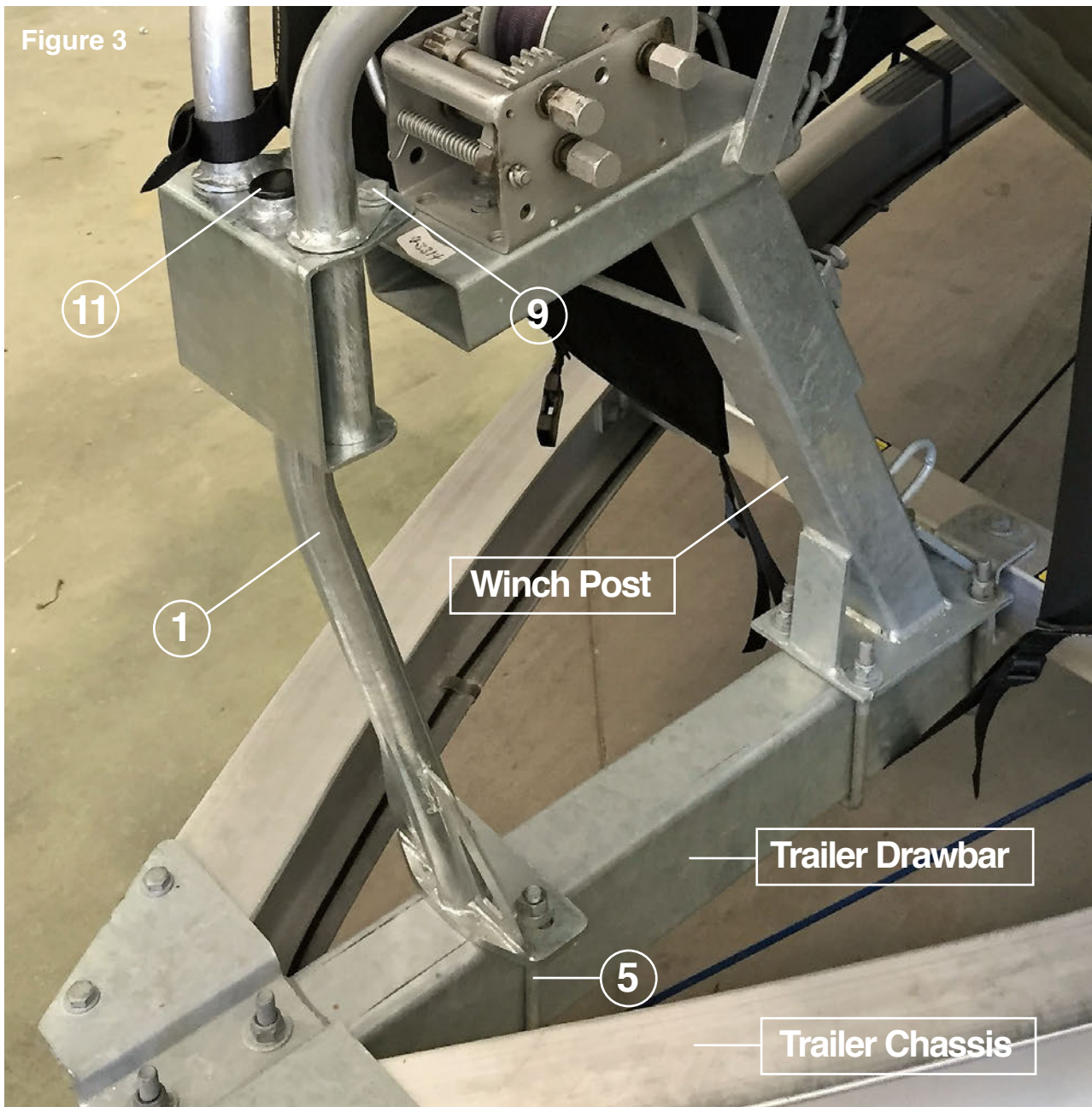
Step 2

Repeat the above for the assembly of the right hand frame

Step 3

Attach the Front Support Post **item 1** to the trailer drawbar using the M12 U bolts **item 5** as shown in Figure 3. Insert the Plastic End Cap 32mm **item 11**.

Note- Front support post must be fitted in front of the winch post - NOT between winch post and boat.



Step 4

Slide the forward end of the Upper Tube LH **item 2** into the corresponding hole on top of the Front Support Post **item 1**. Rest the rear end of the Tube assembly on the trailer chassis.

Step 5

Using the Bolt / Nylock Nut M10 x 20 **item 9** secure the Upper Tube LH **item 2** to the Front Support Post **item 1**. As shown in Figure 3.

Note - Do not tighten at this stage!

Step 6 (Reference Figure 4)

Place a rear mounting plate **item 7** between the trailer chassis and the Rear Vertical Tube **item 4**.

Note - The Rear Mounting Plate should be mounted in the direction that provides the most support to the lower horizontal portion of the Rear Vertical Tube item 4.

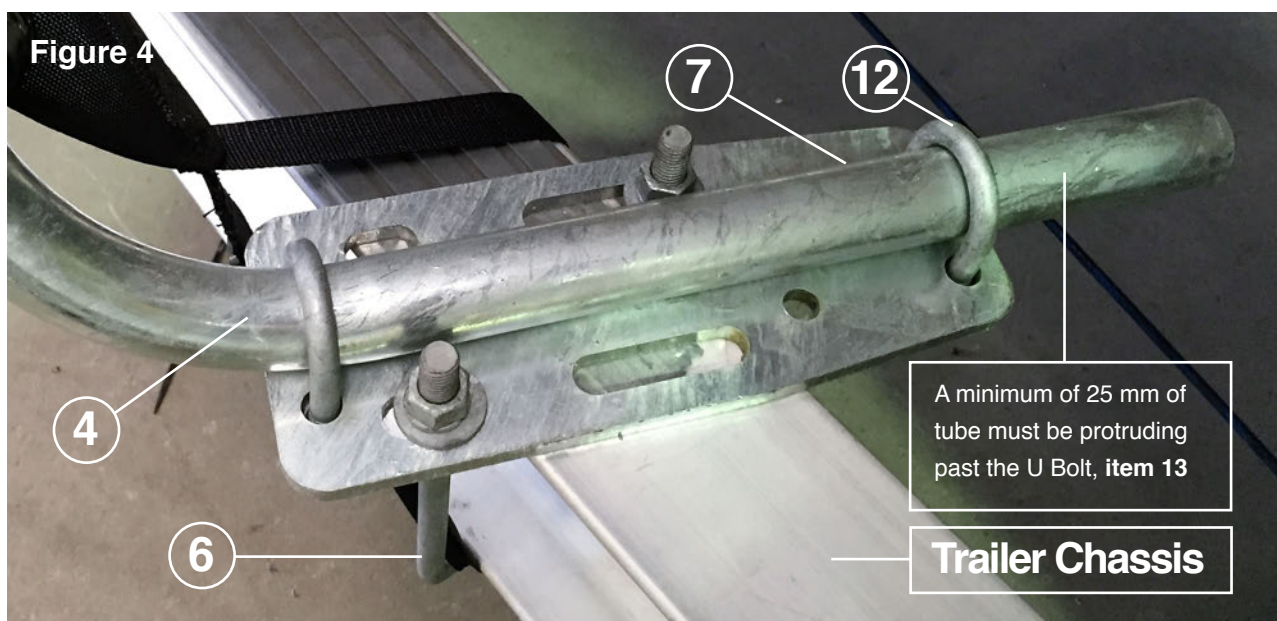
Step 7

Place U Bolts **item 12** over the Rear Vertical Tube **item 4** and fasten with the nuts and spring washers.

Step 8

Place a U Bolt **item 6** around the trailer chassis and through the slots in the Rear Mounting Plate **item 7** and secure with the nuts and spring washers.

Note - For best support the U Bolt should be fitted through diagonally opposite slots in the Rear Mounting Plate item 7.



Step 9

Adjust the tube assembly to best fit the profile of the boat hull.

IMPORTANT

No part of the Stone Guard can protrude outside of the widest part of the boat or trailer or be any closer to the boat hull than 100mm.

Step 10 - Secure all fasteners

Step 11

Attach the mesh to the frame assembly using the Bungee Cord Loops **item 8**. Refer to figure 5.



Step 12

Attach the mesh to the trailer chassis using the straps sewn to the mesh as shown in figure 6,7 & 8.





Figure 7

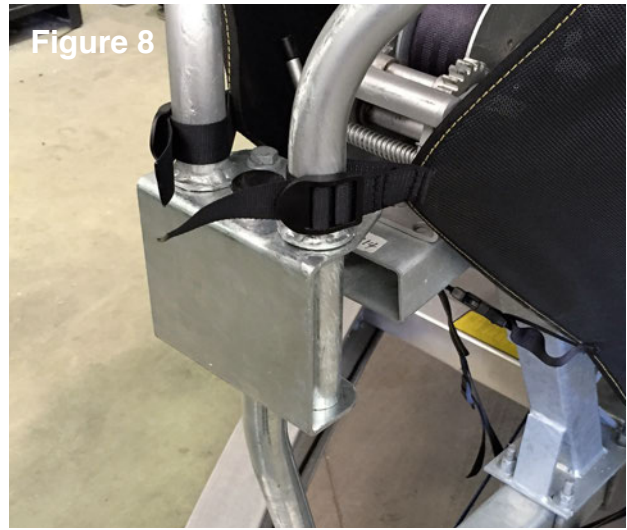


Figure 8

Note – To access the winch and safety chains simply undo the strap connecting the mesh to the front support post and the buckle. If zipper is not fitted, re-secure when travelling. Refer to Figure 9

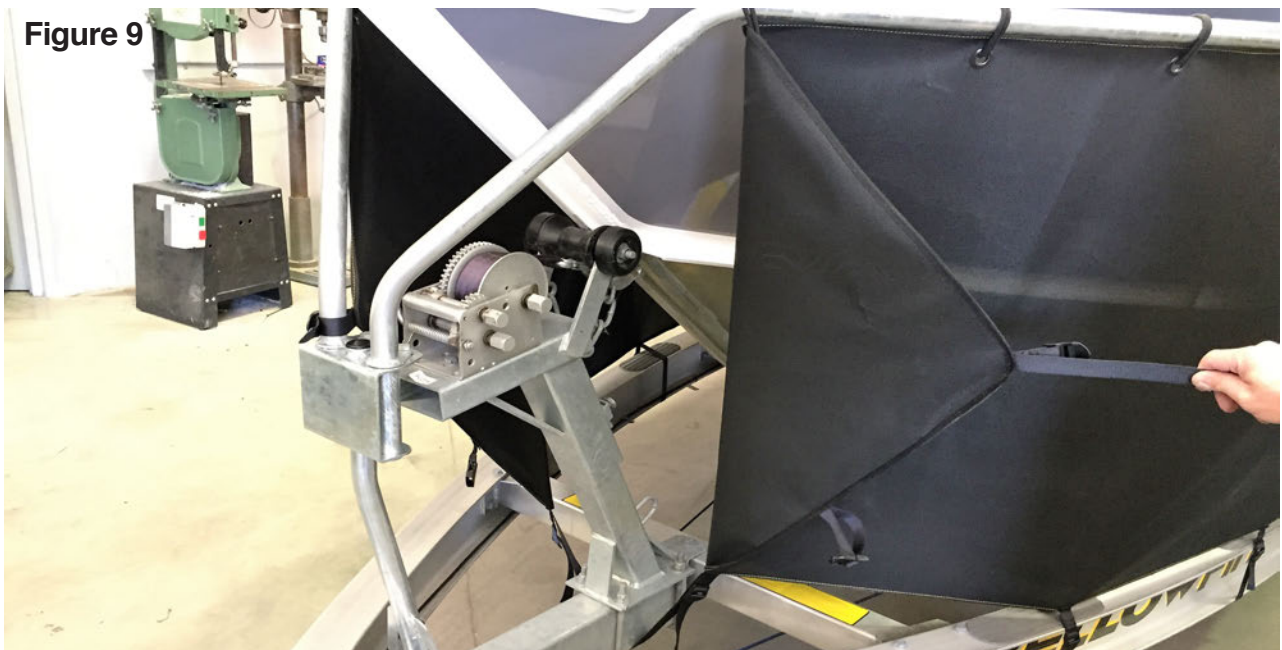


Figure 9

IMPORTANT

Periodically check to ensure that all fasteners are tight and that all structural components are sound.

JGC Components Pty Ltd, warrants this product to be free of defects in material and/or workmanship at the time of retail purchase by the original purchaser. If the product is found to be defective, JGC Components Pty Ltd, may repair or replace the product, at their opinion, when the product is returned, prepaid, with proof of purchase. Alteration to, misuse of, or improper installation of this product voids the warranty. JGC Components Pty Ltd's liability is limited to repair or replacement of products found to be defective, and specifically excludes liability for incidental or consequential loss or damage.